

ALPHA

Design by Ramos & Bassols.

VIBIA
LIGHT IS CREATION

Reference

7940.

Application

Wall Lamps

Installation type

Surface

Description

Wall light designed by Ramos & Bassols with basic lines but great features. Available in matt white lacquer and chrome, matt black lacquer and chrome, matt graphite lacquer and black and matt white lacquer. Its methacrylate diffuser gives a warm, very cosy light. Alpha follows the reader's movements as it rotates and can be angled, opening up to 75° and turning through 360°, which also enables it to provide indirect lighting.

Diffuser

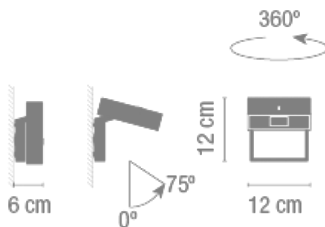
Polycarbonate diffuser

Finish



7940-03. Matt white lacquer and chrome
7940-04. Matt black lacquer and chrome
7940-18. Matt graphite lacquer and black
7940-93. Matt white lacquer

Sketch

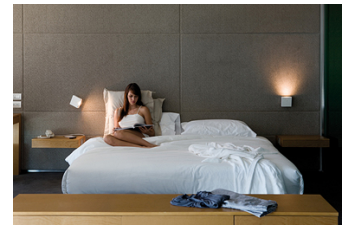
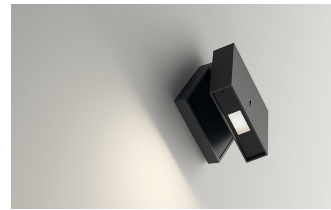


Electrical characteristics

1 x LED 2.2W 700mA



Total 2.2 W



Physical characteristics

1 Box / 0.13 x 0.20 x 0.21 m. / Vol. 0.0055 m³ /
Gross weight 1.2 kg. / Net weight 1.0 kg.

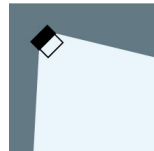
Installation and assembly

Please, see the installation manual

Light distribution

Reading

Lamp having a light beam whose main function is to supply sufficient light for reading.



Photometric data

Efficiency : 100.00%

Coordinate system : C-G

Total flux : 31.40 lm

Maximum value : 803.31 cd/klm

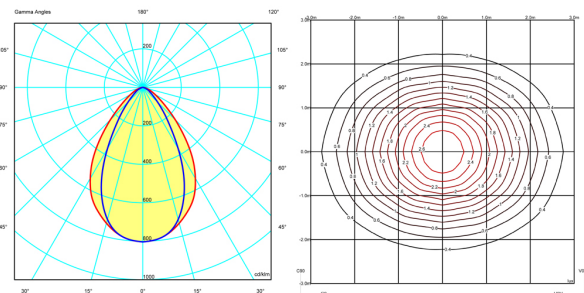
Light position : C=0.00 G=0.00

Symmetry on the planes : Double symmetrical

Isolux : Isolux (floor)

Light position :

X=0.00m Y=0.00m Z=3.00m



Certificates

